

MEA60-200-10-PtBlack

Product type

Micro-Electrode Array Biochip compatible with the data acquisition systems from Multi Channel Systems MCS GmbH, Reutlingen, Germany.

Characteristics

Substrate dimension: 12mm x 12mm x 0.7mm
 Substrate material: Glass
 Electrode material: Platinum black
 Insulation material: SU-8 epoxy, thickness 5 μ m
 Working Temperature: 10°C - 70°C

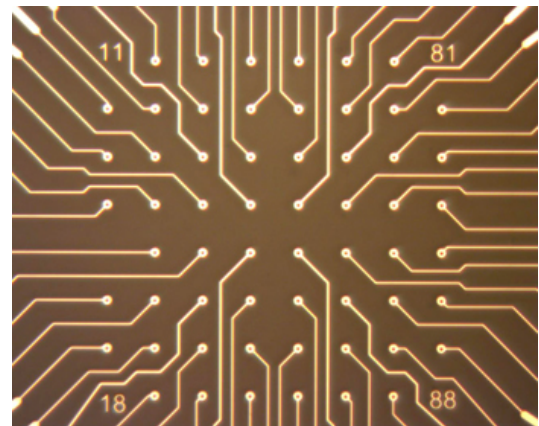
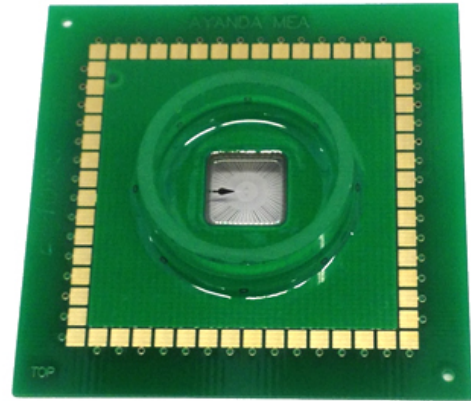
Electrode geometry: Planar

Recording electrodes: 59
 Reference electrode: One internal reference (N°15)

Electrode layout: 8x8 matrix
 Electrodes dimension: $\varnothing 10\mu$ m
 Interelectrode distance: 200 μ m (centre to centre)
 Impedance (@1kHz): 150-200k Ω

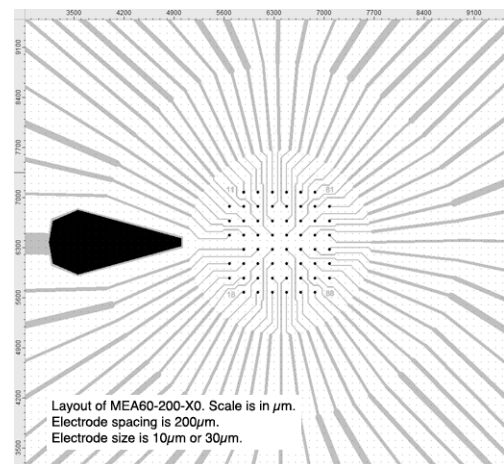
Culture chamber: Glass ring
 External $\varnothing 24$ mm, height 6mm

Required accessory: MEA60-Spacer-1 or
 MEA60-Spacer-2



Applications

Dissociated cell cultures (brain tissue, spinal cord, retina, heart muscle cells, etc.)



Product information is subject to change without notice

© 2014, Qwane Biosciences SA