

MEA60-4Well-PtBlack

Product type

Micro-Electrode Array Biochip compatible with the data acquisition systems from Multi Channel Systems MCS GmbH, Reutlingen, Germany.

Characteristics

Substrate dimension: 21mm x 21mm x 0.7mm
Substrate material: Glass
Electrode material: Platinum black
Insulation material: SU-8 epoxy, thickness 5 μ m
Working Temperature: 10°C - 70°C

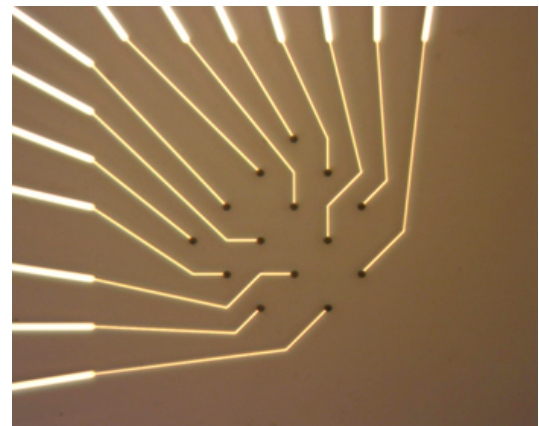
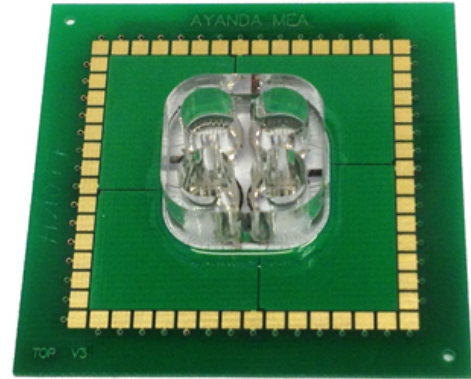
Electrode geometry: Planar

Recording electrodes: 56 (14 in each well)
Reference electrode: One internal reference per well;
electrodes N°15, 42, 57, 84

Electrode layout: 4x4 matrix in each well
Electrodes dimension: $\varnothing 30\mu$ m
Interelectrode distance: 200 μ m (centre to centre)
Impedance (@1kHz): 20-30k Ω

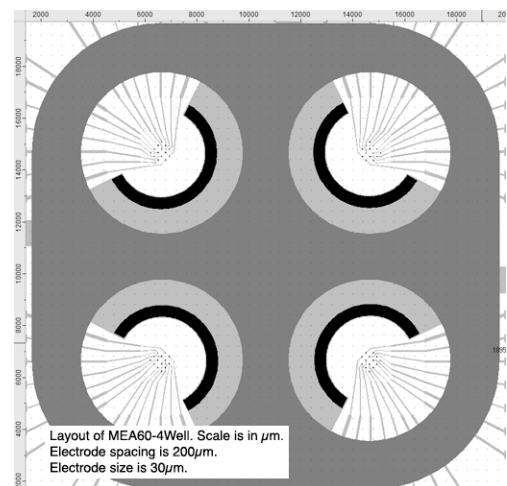
Culture chamber: Plexiglass chambers
well $\varnothing 6$ mm, height 8mm

Required accessory: MEA60-Spacer-2



Applications

Dissociated cell cultures (brain tissue, spinal cord, retina, heart muscle cells, etc.)



Product information is subject to change without notice

© 2014, Qwane Biosciences SA