

MEA60-4x15-3D-S1

Product type

Micro-Electrode Array Biochip compatible with the data acquisition systems from Multi Channel Systems MCS GmbH, Reutlingen, Germany.

Characteristics

Substrate dimension: 21mm x 21mm x 0.5mm
 Substrate material: Glass
 Electrode material: Platinum
 Insulation material: SU-8 epoxy, thickness 5 μ m
 Working Temperature: 10°C - 70°C

Electrode geometry: 3D tip-shaped
 Electrode height: 60-80 μ m
 Recording electrodes: 60
 Reference electrode: external reference to be used or accessory MEA1060-A1 or MEA1060-A2 to access internal reference electrodes
 Stimulation electrodes: Also includes 4 pairs of stimulation electrodes only accessible via an accessory

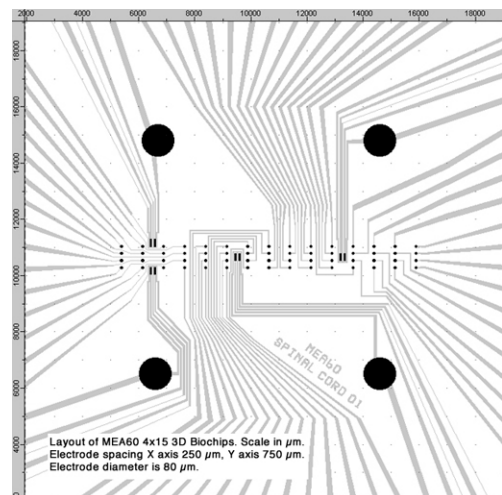
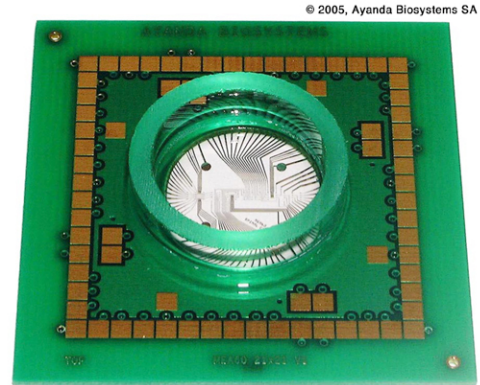
Electrode layout: 4x15 matrix
 Electrodes dimension: \varnothing 80 μ m
 Interelectrode distance: 250 μ m/750 μ m (centre to centre)
 Impedance (@1kHz): 80-150k Ω , stimulation elec. 50-90k Ω , reference elec. <1k Ω

Culture chamber: Glass ring
 External \varnothing 24mm, height 6mm

Required accessory: MEA60-Spacer-2

Applications

Acute slice preparations and organotypic slice cultures (brain tissue, spinal cord, retina, etc.)



Product information is subject to change without notice

© 2014, Qwane Biosciences SA