

MEA60-4x15-Pt-S1

Product type

Micro-Electrode Array Biochip compatible with the data acquisition systems from Multi Channel Systems MCS GmbH, Reutlingen, Germany.

Characteristics

Substrate dimension: 21mm x 21mm x 0.7mm
Substrate material: Glass
Electrode material: Platinum
Insulation material: SU-8 epoxy, thickness 5 μ m
Working Temperature: 10°C - 70°C

Electrode geometry: Planar

Recording electrodes: 60
Reference electrode: external reference to be used or accessory MEA1060-A1 or MEA1060-A2 to access internal reference electrodes

Stimulation electrodes: Also includes 4 pairs of stimulation electrodes only accessible via an accessory

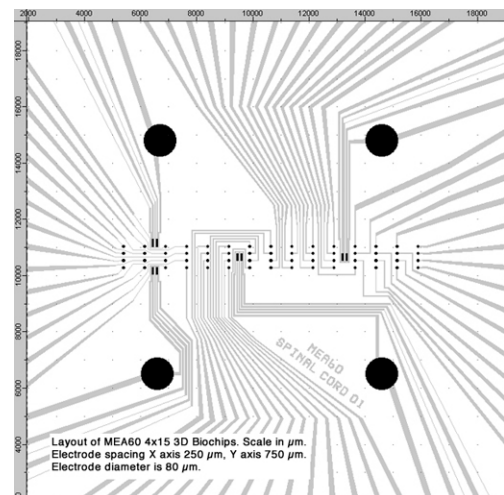
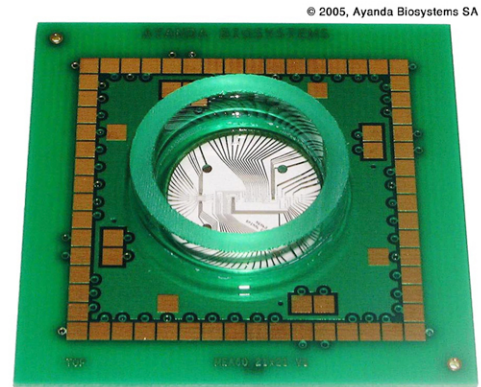
Electrode layout: 4x15 matrix
Electrodes dimension: $\varnothing 40\mu$ m
Interelectrode distance: 250 μ m/750 μ m (centre to centre)
Impedance (@1kHz): 500-800k Ω
stimulation elec. 50-90k Ω ,
reference elec. <1k Ω

Culture chamber: Glass ring
External $\varnothing 24$ mm, height 6mm

Required accessory: MEA60-Spacer-2

Applications

Dissociated cell cultures (brain tissue, spinal cord, retina, heart muscle cells, etc.)



Product information is subject to change without notice

© 2014, Qwane Biosciences SA