

## MEA60 200 Au

### Product type

Micro-Electrode Array Biochip compatible with the data acquisition systems from Multi Channel Systems MCS GmbH, Reutlingen, Germany.

### Characteristics

Substrate dimension: 15mm x 15mm x 0.7mm  
Substrate material: Glass  
Electrode material: Gold  
Insulation material: SU-8 epoxy, thickness 5 $\mu$ m  
Working Temperature: 10°C - 70°C

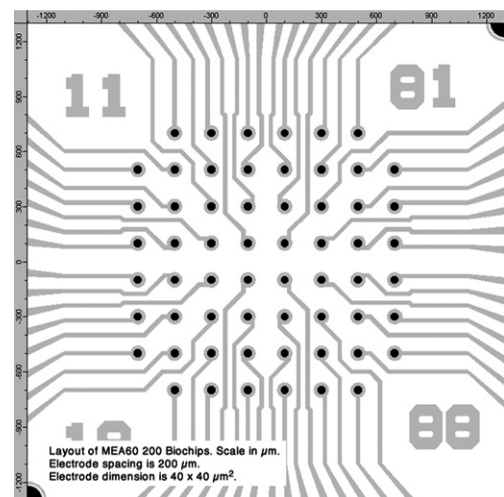
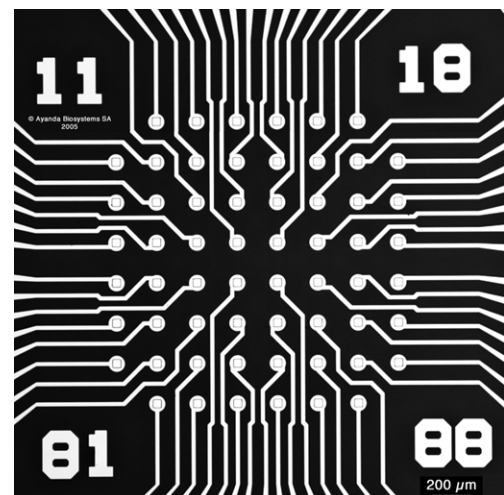
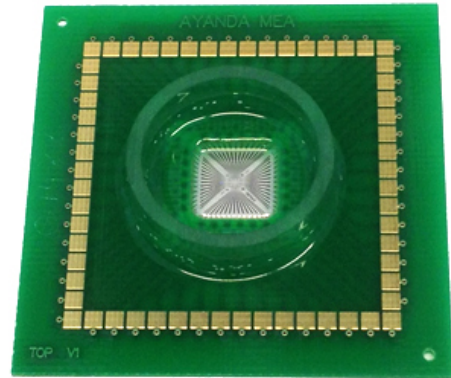
Electrode geometry: Planar

Recording electrodes: 60  
Reference electrode: external reference to be used

Electrode layout: 8x8 matrix  
Electrodes dimension:  $\varnothing 40\mu$ m  
Interelectrode distance: 200 $\mu$ m (centre to centre)  
Impedance (@1kHz): 700-900k $\Omega$

Culture chamber: Glass ring  
External  $\varnothing 24$ mm, height 6mm

Required accessory: MEA60-Spacer-1 or  
MEA60-Spacer-2



### Applications

Dissociated cell cultures (brain tissue, spinal cord, retina, heart muscle cells, etc.)

Product information is subject to change without notice

© 2014, Qwane Biosciences SA