

MEA60 200 Pt 21x21

Product type

Micro-Electrode Array Biochip compatible with the data acquisition systems from Multi Channel Systems MCS GmbH, Reutlingen, Germany.

Characteristics

Substrate dimension: 21mm x 21mm x 0.7mm
 Substrate material: Glass
 Electrode material: Platinum
 Insulation material: SU-8 epoxy, thickness 5 μ m
 Working Temperature: 10°C - 70°C

Electrode geometry: Planar

Recording electrodes: 60
 Reference electrode: external reference to be used or accessory MEA1060-A1 or MEA1060-A2 to access internal reference electrodes

Stimulation electrodes: Also includes 4 pairs of stimulation electrodes only accessible via an accessory

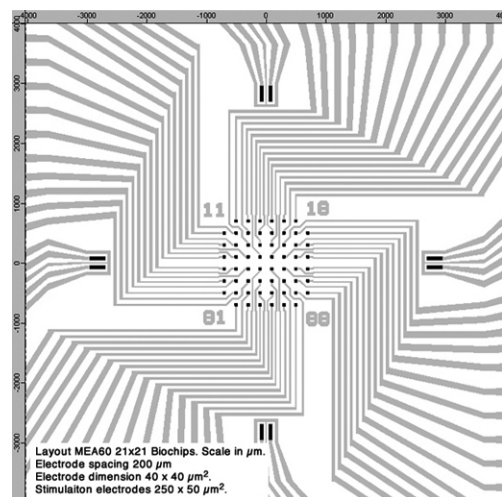
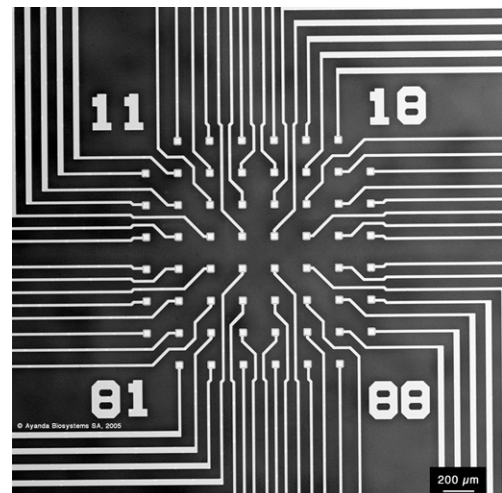
Electrode layout: 8x8 matrix
 Electrodes dimension: 40 μ m x 40 μ m
 Interelectrode distance: 200 μ m (centre to centre)
 Impedance (@1kHz): 500-700k Ω
 stimulation elec. 50-90k Ω ,
 reference elec. <1k Ω

Culture chamber: Glass ring
 External \varnothing 24mm, height 6mm

Required accessory: MEA60-Spacer-2

Applications

Dissociated cell cultures (brain tissue, spinal cord, retina, heart muscle cells, etc.)



Product information is subject to change without notice

© 2014, Qwane Biosciences SA